

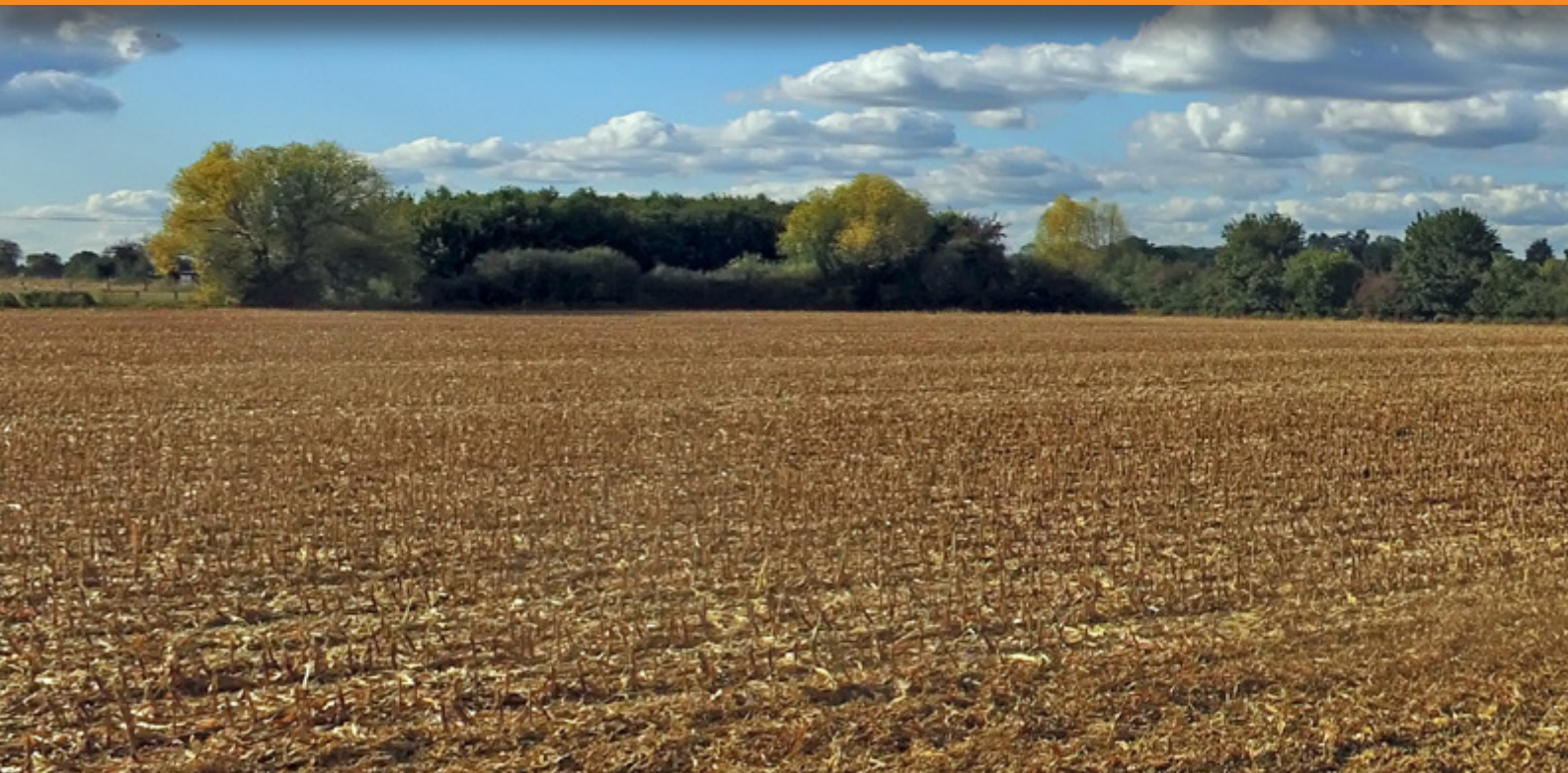
**Kverneland Chopper Range**



# Multipurpose and Agri Choppers



# Versatile, Reliable, Efficient!



**FML**



**FHS**



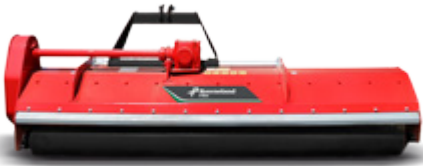
**FHP**



**FHP PLUS**



**FRO**



**FRH**

The extensive range of Kverneland straw choppers ensures there is a model to suit every operating requirement. Each model provides great results in a wide variety of operating conditions.

All models are solidly constructed with a robust gearbox and reliable "V" belt transmission. A high strength body with double plating in critical areas provides further reassurance.

A combination of precision engineered rotor shafts and hard wearing blades ensure reliable operation, while keeping maintenance requirements to a minimum.



**FRD**



**FXE**



**FXN**



**FXZ**



**FXF**

## Kverneland Chopper FML

# The Specialist for Green Areas



The Kverneland FML grass chopper is a small, medium duty machine for use on slightly rough ground green areas, amenity areas, and tidying up pasture.

It is available in 3 models from 1,20m working width to 1.80m. The FML is very easy to operate and requires minimum maintenance.

As well as the universal blades fitted as standard, blades for stony conditions and cup blades can be fitted on request.

The FML is suitable for tractors up to 50hp.

The core of the FML chopper is the rotor: fast rotation speed (1993rpm) in combination with a high number of blades make the FML a unique chopper.

As standard the FML offers a mechanical offset: the headstock can be fitted in the centre or on the left side of the chopping unit.

The FML is equipped as standard with a rear roller which allows reliable cutting height control. Alternatively a pair of skids can be supplied on demand.

Kverneland FML - the perfect choice for green areas.



### **The Advantages:**

- For tractors up to 50hp
- Small to medium machine
- Versatile for use on slightly rough ground and other green areas, in amenity areas, for tidying up pasture and similar conditions
- Easy to operate
- Minimal maintenance
- Wide choice of blades



All gearboxes in Kverneland choppers range offer as standard integrated free wheel.



The FML is equipped as standard with a rear roller which allows accurate control of cutting height.

## Kverneland Chopper FHS

# Efficient and Durable!



The Kverneland FHS Chopper is a compact and heavy duty machine for moderately demanding jobs in soft and top fruit orchards, vineyards and light undergrowth. It is equally perfect for tidying pasture and other grass fields, and chopping straw and stubble after combine harvesting.

Due to its rugged construction the FHS ensures a long lifetime with minimal

maintenance.

Adjustable headstock offset up to 500mm gives added versatility for reaching under fruit trees and safer working close to the edges of drainage channels. As an option, hydraulic adjustment of the offset can be specified. In addition the standard roller and the skids support the chopper and provide a consistent working height.

The design of the FHS is modern and versatile; the latest generation rotor can

be equipped with different types of blades, making the machine adaptable to most conditions.

Highest rotor speeds (2243rpm) in combination with a counterknife and the double skin, guarantee an excellent shredding effect with minimal power requirement.



### The Advantages:

- For tractors up to 80hp
- Compact heavy duty machine
- Versatile for use in soft and top fruit orchards, vineyards and light undergrowth
- It is equally at home tidying pasture and other grass fields and chopping straw and stubble after combine harvesting
- Solid construction for long life
- Minimal maintenance
- Wide choice of blades
- Sideways adjustment to manoeuvre around or under trees and bushes (optional hydraulic operation of offset adjustment)



The Kverneland FHS can be equipped with rake tines to improve chopping on prunings.



A 160mm diameter roller with an adjustable scraper is fitted as standard equipment. Adjustable scraper ensure a correct field performance.



Gearbox up to 80hp - PTO speed drive 540 rpm. Protected by integrated free-wheel.

## Kverneland Chopper FHP

# Efficient working in all conditions



The Kverneland FHP is a new multipurpose chopper for road maintenance, clearing out field edges, ditches and hedges. In addition the FHP shows versatility in operation on grass, light wood and bushes thus being ideal for the maintenance of parks, gardens and road sides.

### **Frame**

Solid construction, heavily protected and reinforced with double skin as standard.

### **Rotor**

High performance rotor with fast rotation speed, combined with large number of hammer blades (13 per meter) ensure superb chopping performance in all conditions. (universal or rock blades also optionally available).

### **Transmission**

Gearbox with freewheel inside and 4 belts with automatic tensioner ensures smooth and reliable power transmission to the rotor.

### **Roller**

Standard 195mm diameter roller with integrated bearings and easy cutting height adjustment.





### The Advantages:

- For tractors up to 110hp
- Massive headstock, reinforced parallelogram and robust articulation
- Big working angle = very versatile in use
- Minimal maintenance
- Solid construction for long working life (double skin)
- Heavily tested in all conditions and environments
- High performance rotor (2243 rpm - 14 hammers/meter)
- Breakaway protection with hydraulic accumulator in case of contact with obstacles
- Large diameter (195mm) self cleaning roller



Maximum versatility - Cutting horizontal.



Vertical.



Banks down to an angle of -65 degrees.

# Kverneland Chopper FHPplus

## More offset - More versatility



Due to the possibility of different working angle positions, the FHPplus is a highly versatile solution for farming and road maintenance purposes. Compact but robust it offers high manoeuvrability and ensures high reliability during work. Compared to the standard FHP chopper the plus version offers greater offset (1255mm) and reaches positions and working angles impossible to get with other equipment. In addition the FHPplus can be combined with a front mounted chopper (FRO or FRD), to maximise coverage.

### Lateral transmission

Power transmission by gearbox with integrated freewheel (up to 150hp) and five belts which incorporate an automatic tensioner, provide stable rotor speed even when working in tough conditions. A PTO shaft with wide angle joint is fitted as standard equipment.





### The Advantages:

- For tractors up to 150hp
- Compact heavy duty machine suggested for all purposes (farms needs, road maintenance...)
- Versatile in all conditions due to extremely efficient articulation ( $-65^{\circ}$  &  $+90^{\circ}$ )
- Solid construction for long life (double skin)
- Minimal maintenance requirement and low costs
- Standard rotor with a wide choice of blades
- Large diameter (195mm) self cleaning roller
- Breakaway protection with hydraulic accumulator in case of contact with obstacles
- Automatic belt tensioner ensures correct tension and no maintenance



Robust and guarded. Main frame and parallelogram articulations designed according FEM analysis and calculations; heavily tested in Klepp laboratory to ensure reliable and safe working life. Gearbox and transmission guarded against eventual misuse during operation.

# Kverneland Chopper FRO

## Front, Rear, Offset!



### **Multi-purpose - for chopping grass, pasture, set-aside land and stubble.**

A strong double headstock allows mounting the machine in front or behind the tractor. Together with the hydraulic offset facility it gives a multi purpose versatility for nearly all conditions e.g. clearing out field edges, orchards, road edges. Available with hammer blades or universal Y blades with fan blades.

### **The Hydraulic Offset**

Ideal for clearing out field edges . Versatile use also for road maintenance. The precisely aligned offset frame machined after the welding process ensures a strong and reliable guidance.

Greasable nylon bushes ensure a long lifetime.

### **Auto-alignment**

The central gearbox fitted into the headstock ensures that the pto-shaft remains straight in all working positions. Even on max. 500 mm offset the pto angle does not change. This guarantees a smooth drive, reduced wearing and a longer lifetime of the pto shaft and the whole driveline (crosses and yokes).



### **Lateral Drive**

Drive by five V-belts type VX running on invertible pulleys which allows adaptation for 540 or 1000 rpm drive. Idler wheel with automatic tensioner spring always ensures stable and low wearing on belt drive. Two maintenance free upper ball bearings.

### **Counter Knives and Double Skin**

One standard U-counter knife. A second U-counter knife is available (optional equipment) for more intense shredding and heavy conditions. Also combinable with double skin.

### **Headstock**

The heavy duty headstock is well proven and the design from the Kverneland power harrows is taken over into this chopper model. This gives a family look within the Kverneland range.

### **Driveline and Gearbox**

140 hp gearbox. Gearbox stays in fixed position in the headstock, even if offset is activated. Free-wheel integrated into the gear box. Lateral drive by telescopic shaft, protected by a tube.

### **Rear roller**

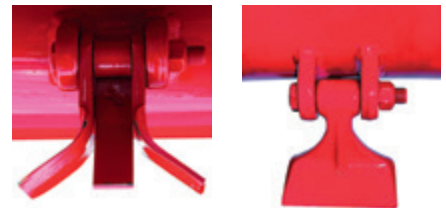
Standard equipment for reliable depth control in all conditions. Ø 160mm with 45mm bearing hub and greasable ball bearings. Replaceable bearing housing. Bearing Hub integrated and interchangeable via skid.

### **Rotor**

A strong 219x8mm tube forms the basis. Large diameter ensures easy and precise balancing and smooth running without vibration.

### **Wheel kit for front use**

Optional equipment for front use - 580mm diameter pivoting wheels.



## **The Advantages:**

- For tractors up to 140hp
- Versatile for use; front, rear and offsetability
- Multi-purpose chopper; grass, stubble, fruit orchards, vineyards and light undergrowth
- Solid construction for long life
- Minimal maintenance
- Auto-line driveline always straight pto, even in off-set position
- Wide choice of blades
- Reliability combined with superb cut quality

# Kverneland Chopper FRH

## Versatile and Reliable



The Kverneland FRH is a multi-purpose machine for chopping grass, pasture, set-aside land and stubble. The hydraulic offset facility of the FRH gives you the possibility to clear out field edges, orchards and road edges. A choice of hammer blades or universal Y blades with short fan blades produce perfect shredding quality in all conditions. With an offset facility of up to 52cm the FRH range is the ideal solution for field and farm maintenance. In addition the large diameter of the rotor (540mm) guarantees excellent cut quality with low power requirement. Easy and minimal maintenance make the FRH a cost effective machine to operate.

### **Frame**

Headstock designed and tested for heavy applications. With all forces and stress concentrated on the three point linkage.

### **Transmission**

Central gearbox up to 160hp with an integrated free wheel as standard. The drive pulleys are reversible allowing for operation with either 540 or 1000 rpm input speed. 5 grooved V-belts combined with an automatic belts tensioner ensure a smooth transmission. No maintenance required.

### **Rotor**

A strong tube 245x10mm is the basis of the rotor. The large diameter of the rotor (540mm) guarantees an excellent cut low power requirement. The counterknife and the double skin are suggested for a finer shredding result of residues and a longer working life of the frame. Skids and a roller are standard equipment and provide accurate control of working depth during field operations. The roller has a 245mm diameter and is self-cleaning (the tools are running very close to the roller profile - 15mm).



### The Advantages:

- For tractors up to 160hp
- Heavy construction for a reliable operation
- Versatile rotor for perfect shredding in all conditions
- Easy operations in the field by hydraulic offset (52cm movements)
- Minimal maintenance, reduction of maintenance costs
- Precise assembly and accurate rotor balancing
- More than 40 years experience in building choppers



Frame.



Transmission.



Rotor.

## Kverneland Chopper FRD

# Versatility combined with efficiency



Double headstock allows front or rear mounting of the FRD.  
Sliding tube integrated in the headstock; all forces stress are concentrated on the three point linkage.  
Standard fit 52cm hydraulically operated offset facility

### **Robust Transmission**

Central gearbox up to 160 hp with double integrated free wheel as standard PTO.  
The drive pulleys are reversible allowing for operation with either 540 or 1000 rpm input speed. 5 V-belts combined with automatic belt tensioner ensures power transmission smooth side transmission, preventing slippage in toughest working conditions. No any maintenance is required.







### The Advantages:

- For tractors up to 160hp
- Front or rear tractor mounting
- Easy field operation with hydraulic offset (52cm movement)
- High performance rotor for excellent cut quality
- Minimal maintenance for low maintenance costs
- Robust frame for longer working life in all conditions
- Durable transmission for cost effective operation



All gearboxes in Kverneland choppers range offer as standard integrated free wheel.



Rear mounting.

## Kverneland Chopper FXE

# An agri chopper suitable for grassland re shredding!



The Kverneland FXE is an agri chopper suitable for grassland renewal, maize, sunflower and sorghum shredding. The frame of the chopping unit is designed with a curved profile, while the rear cover can be opened to handle large amounts of crop residue. In addition, the high chopping chamber guarantees blockage free performance in even the toughest conditions. The rotor of the FXE can be equipped with universal blades or hammer blades. The Kverneland FXE comes with lateral skids as standard. FXE can optionally be equipped with a rear roller (245mm diameter) or 2 pivoting

wheels (10/8.0x12.8) for a constant control of the working depth. The roller bearings are integrated and protected and do not need regular greasing. Also the semi pivoting wheels kit doesn't need any maintenance. Double skin and a second counter knife can be added as accessories in order to extend the life of the chassis and create finer chopped residues. Excellent performance as well as very limited power requirement and maintenance activities (low operating costs) make the FXE chopper the ideal choice for farmers and contractors.

# newal, maize, sunflower and sorghum



## The Advantages:

- For tractors up to 120hp
- Working width 280cm
- Rigid or Hydraulic frame (offset of 55cm)
- Pivoting wheels or rollers to ensure correct working depth
- PTO speed 540 or 1000rpm (inverting pulleys)
- Rotor speed 1830rpm
- Lateral transmission by 5 belts
- Different choice of blades on same rotor – openable rear cover
- Standard with skids - Roller or wheels as option



The rotor of the FXE can be equipped with universal with blades or hammer blades. And the lateral skids as standard.



FXE can be equipped with a rear roller (245mm diameter) or 2 pivoting wheels (10/8.0x12.8) for a constant control of the working depth.

# Kverneland Chopper FXN

## The Chopper for Specialists



### **Great versatility in all conditions**

The FXN range comprises Kverneland's largest and toughest grass and straw choppers for heavy-duty work on set-aside land and cultivated fields. But also very useful for fruit farms clearing scrub and tidying pasture. The FXN is available in 4 working widths covering all operating requirements.

### **Unique versatility and high field performance**

Kverneland FXN choppers offer a unique operational versatility. The high rotor speed combined with a large number of blades increases the cutting efficiency while reducing the input

power required. The rotor is manufactured precisely and is dynamically balanced after the blades have been fitted; this provides smooth running without vibrations.

### **Range of accessories**

The FXN can be equipped with different blade types in order to fulfill all customers demands. The skids are included in the standard configuration, wheels or a optionally available. Furthermore double skin and second counterknife are optionally available. However, all models are solidly constructed throughout with a robust gearbox and very strong power transmission to the "V" belts driving the shafts. In addition, they have a

strengthened chassis with double plating in the areas subjected to highest stress. The combination with Kverneland's precisely manufactured rotor shafts and hard wearing blades makes them extremely reliable.

### **Transmission**

Central gearbox up to 160 hp with integrated free wheel as standard. The drive pulleys are reversible allowing for operation with either 540 or 1000 rpm input speed. 5 grooved V-belts combined with automatic belt tensioner ensure smooth transmission. No maintenance required.



### The Advantages:

- For tractors up to 160hp
- Heavy construction for reliable operation
- Versatile rotor for perfect shredding in all conditions
- Easy adjustment in the field
- Minimal maintenance, reduction of maintenance costs
- Precise assembly and accurate rotor balancing
- More than 40 years experience in building choppers



#### Lateral transmission.

5 grooved V-belts combined with automatic belts tensioner always ensure smooth transmission, preventing slippage in toughest working conditions. No any maintenance is required.



#### Rotor

A strong tube 245x10mm firms the basis. Standard for universal and hammer blades. The large diameter of the rotor (650mm) guarantees an excellence cut with low power requirement.

## Kverneland Chopper FXZ

# The King of the Choppers!



The Kverneland FXZ range has been designed to fulfill the most demanding requirements.

FXZ choppers have been designed to provide comprehensive chopping of crop residues for more effective decomposition. The development of these choppers was focused on the requirements of intensive users; so the FXZ is ideal for very demanding and specialized contractors. The FXZ is excellent for shredding crop residues, chopping straw, maize and sunflower stalks as well as set-aside land.



### Rotor

The same rotor can be equipped with either Y blades or hammer blades; in all configurations special fan blades lift the material up for a better shredding effect. The large diameter (760mm) guarantees an excellent cut with low power requirement.



### The Advantages:

- For tractors up to 260hp
- Heavy construction for a reliable operation
- Versatile rotor for perfect shredding in all conditions
- Easy adjustment in the field
- High performance rotor for bigger working capacity
- Minimal maintenance
- Reduction of maintenance cost
- Precise assembly and accurate rotor balancing
- More than 40 years experience in building choppers



Semi pivoting wheels (10/8.0 x 12.8 ply) as standard ensure good stability and a constant working depth of the FXZ during field operations.



Semi automatic linkage (Cat III) allows fast coupling of FXZ. In addition the floating top link mounting permits easy control of the working depth without stressing force on the headstock.



The FXZ is always equipped with a double lateral transmission. External and centralized greasing points of the rotor ensure a quicker maintenance.

## Kverneland Chopper FFX

# High Performance Potential



The FFX foldable is particularly suitable for tractors up to 260hp, with working widths from 5.60 to 6.40m.

Wide in field - narrow on the road: Despite the size the FFX folds to 2.50m transport width.

The highly efficient rotor, which can work at a speed of 2025rpm ensures an excellent chopping in all conditions, thanks to its diameter of 540mm, and 144 blades plus fan blades.

Highest rotor speeds (2025rpm) in

combination with a counterknife and the double skin, guarantee an excellent shredding effect with minimal power requirement.

The lateral transmission with 5 belts tensioned automatically. An option are the pivoting wheels or rollers that guarantee a constant working depth.

Maximum reliability, efficiency and versatility is what the FFX offers. This comes from 40 years of experience in building choppers.



Transport width 250cm.





### The Advantages:

- For tractors up to 250hp - Heavy construction for a reliable operation
- High performance rotor for excellent shredding in all conditions:
- 144 blades plus fan blades (or 72 hammers) with total diameter of 540mm
- Pivoting wheels or rollers to ensure correct working depth
- Double lateral transmission with automatic belt tensioner
- Minimal maintenance to keep costs under control
- Double skin and second counterknife as option for intensive shredding
- Central gearbox with integrated free wheel
- Top link with slot for better ground contour
- Skids with narrow profile to avoid bulldozing effect



Working width from 560 to 640cm. The standard roller (Ø245mm) is running close to the profile to ensure a self-cleaning effect.



Semi pivoting wheels (10/8.0 x 12.8 ply) as option ensure a good stability and a constant working depth during field operations.



The central gearbox (250hp) is equipped with free wheels; the lateral transmission (5 belts each side) with an automatic belt tensioner ensures reliability and a low maintenance effort.

# Technical Specifications

MODELS	FML			FHS					FHP			FHPplus		
Working width (cm)	120	150	180	155	185	200	230	250	155	185	200	200	230	250
Transport width (cm)	140	170	200	177	207	222	252	274	175	205	220	200	240	250
Weight (kg)	247	272	329	475	540	572	620	655	740	780	820	870	925	955
No. of universal blades	64	80	96	40	48	56	60	64	40	48	52	56	60	64
No. of hammer blades	-			20	24	28	30	32	20	24	26	28	30	32
Pto input speed (rpm)	540			540					540			540		
Min-Max. power requirement (hp)	25 - 50			35 - 80					45 - 110			70 - 130		
Rotor speed (rpm)	1993			2243					2243			1996		
Blade tip speed (m/s)	46			52					52			52		
Rotor shaft diameter (mm)	40			50					50			50		
Rotor diameter (mm)	129			170					170			170		
Cutting diameter (mm)	386			450					450			450		
No. of belts	2-3			5					5			5		
Belt tensioner	by screw setting			automatic					automatic			automatic		
Offset (mm)	-			500					600			1200		
Rear roller	135mm standard			160mm standard					195mm standard			195mm standard		
Rear wheels	-			-					-			-		
Skids	option			standard					standard			standard		

	FRO			FRH			FRD		FXE	FXN				FXZ		FXF	
	235	280	325	235	280	320	280	320	280	195	235	280	320	320	400	560	640
	254	300	346	250	295	335	295	335	300	212	250	295	335	350	430	250	250
	863	980	1080	1025	1135	1225	1220	1380	940	890	1050	1174	1302	1750	2200	2400	2850
	40	48	56	56	72	80	72	80	68	48	56	72	80	120	152	144	160
	20	24	28	28	36	40	36	40	34	24	28	36	40	60	76	72	80
	540 or 1000			540 or 1000			540 or 1000		540 or 1000	540 or 1000				1000		1000	
	60 - 140			70 - 160			90-160		65 - 110	55 - 160				100 - 260		130 - 260	
	1729 - 1828			1844 - 1949			1844 - 1949		1830 - 1910	1729 - 1828				1611		2025	
	44 - 48			52 - 55			52 - 55		52-54	59 - 62				64		56	
	50			55			55		50	55				60		55	
	220			245			245		220	245				273		245	
	500			540			540		640	650				760		540	
	5			5			5		5	5				2 x 4		2 x 5	
	automatic			automatic			automatic		by srew setting	automatic				by srew setting		automatic	
	500			540			540		540 option	-				-		-	
	160mm standard			245mm standard			245mm standard		245mm option	245mm option				-		245	
	option (front)			-			-		option	option				standard		10/8.0 x 12.8	
	standard			standard			standard		standard	standard				standard		standard	

Information provided in this brochure is made for general information purposes only and for worldwide circulation. Inaccuracies, errors or omissions may occur and the information may thus not constitute basis for any legal claim against Kverneland Group. Availability of models, specifications and optional equipment may differ from country to country. Please consult your local dealer. Kverneland Group reserves the right at any time to make changes to the design or specifications shown or described, to add or remove features, without any notice or obligations. Safety devices may have been removed from the machines for illustration purposes only, in order to better present functions of the machines. To avoid risk of injury, safety devices must never be removed. If removal of safety devices is necessary, e.g. for maintenance purposes, please contact proper assistance or supervision of a technical assistant. © Kverneland Group Ravenna S.r.l.



## Kverneland Group

**Kverneland Group is a leading international company developing, producing and distributing agricultural machinery and services.**

Strong focus on innovation allows us to provide a unique and broad product range with high quality. Kverneland Group offers an extensive package of systems and solutions to the professional farming community. The offering covers soil preparation, seeding, forage- and bale equipment, spreading and spraying.



## Original Spare Parts

**Kverneland Group spare parts are designed to give reliable, safe and optimal machinery performance - whilst ensuring a low cost life-cycle. High quality standards are achieved by using innovative production methods and patented processes in all our production sites.**

Kverneland Group has a very professional network of partners to support you with service, technical knowledge and genuine parts. To assist our partners, we provide high quality spare parts and an efficient spare parts distribution worldwide.



**Watch us on YouTube**  
[www.youtube.com/kvernelandgrp](http://www.youtube.com/kvernelandgrp)



**Like us on facebook**  
[www.facebook.com/KvernelandGroup](http://www.facebook.com/KvernelandGroup)  
[www.facebook.com/iMFarming](http://www.facebook.com/iMFarming)



**Follow us on Twitter**  
[@KvernelandGroup](https://twitter.com/KvernelandGroup)  
[@iM\\_Farming](https://twitter.com/iM_Farming)

