



For Earth, For Life  
Kubota

# RA

**KUBOTA ROTARY RAKES**

**RA1000/RA1500/RA2000/  
RA2500/RA4000/RA4500**

Rotary rakes with working widths from 3.20m to 15.00m





# DURABILITY EXEMPL



## **CompactLine**

The Kubota CompactLine rakes feature oil-immersed cam discs and guide rollers. Also, the tine arm bearings are fully lubricated, and hence absolutely maintenance-free.

High-tensile tine arm holders and two bearings on either side of the driveshaft, provide the compact unit with strength and dependability.

Kubota-developed cam tracks are specifically tailored to individual rotor diameters, for optimum raking at any working width and on any model.

All CompactLine rakes are fitted with curved tine arms, to ensure a regular and even swath formation. Additionally the curved shape prevents material from being pushed in the direction of the rotor and allows a higher lifting out of the swath.

## **ProLine**

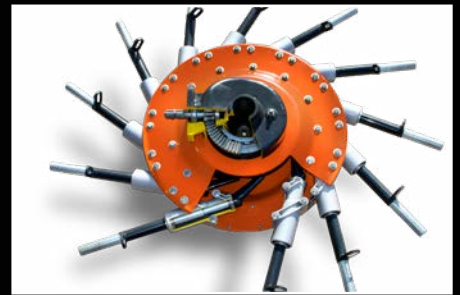
The Kubota ProLine rakes feature a unique drive system, which comprises oil-immersed pinion and crown wheels. The fully enclosed design ensures full and permanent lubrication, and makes the entire system absolutely maintenance-free.



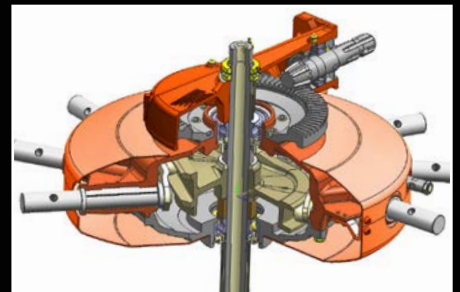


## ***MAINTENANCE-FREE OPERATION***

- Steplessly adjustable cam track for easy adaptation to different amounts and sorts of crop.
  - Injection moulded aluminium tine arm support housings provide strength and reduced weight.
  - All tine arms, including housing, can be removed individually by just removing 3 bolts.
  - Oil-immersed crown wheel and pinion reduces wear to a minimum.
  - Pinion gear with two bearings separate from the main driveline, keeps pinion and crown wheel securely in place.
  - Flat 400mm cast iron cam track with optimised shape, for smooth tine arm control and reduced running speed.
  - Unique 4-point ball bearing on crown wheel ensures efficient power transfer to the tine arms.
  - Guide rollers with hardened surface minimise wear on cam track and cam follower.
- Heavy duty ball bearings with large distance for excellent support of tine arm shafts.



*Maintenance-free ProLine rotor – fully enclosed and permanently lubricated rotor gear.*



*Maintenance-friendly CompactLine rotor head within a fully enclosed housing.*

Our extensive experience guarantees well-proven technology of the highest standard. The hardened cam track is adjustable and with an extremely large 400mm diameter, giving positive guidance to the steel rotors and quiet machine running.

The optimised shape of the curve disc allows the tine arms to lift higher, leaving a more uniform swath formation which ensures a faster drying process. Aluminium bearing housings, with two integral ball bearings and wide support, provide solid and maintenance-free tine arm mounting. Additionally all tine arms including housing are removed by simply removing 3 bolts. Fast and easy!



# EXCELLENT GROUND



*The rotors are fully flexible in all directions, which means the tines have an exceptional ground following ability...*



# FOLLOWING



## TerraLink Quattro

The TerraLink system consists of two parts. First the lifting arm and second the undercarrier. The arm is slotted on the downside. This, together with special steel quality, makes it possible for the frame to flex without breaking.

The undercarrier, with a minimum of 4 (Quattro) wheels, guides the rotor perfectly over the ground.

TerraLink is a simple system without a complicated and maintenance-intensive cardanic system.

Thanks to the pre-pressure on the front tires during work, the running characteristics is very smooth, also in very uneven conditions.

## TerraLink Offers 4-Fold Advantages:

The TerraLink system offers clear advantages over pivoting linkage systems:

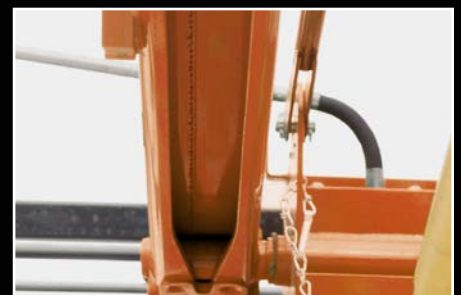
- Maintenance-free system - no pivots or joints to wear out.
- Automatic rotor suspension, ensuring smooth operation.
- Built-in pressure bias on front wheels prevents lifting and tine bounce.
- Optimum ground following for clean raking at high forward speeds. All wheels are positioned close to the tines.

## Perfect Ground Following

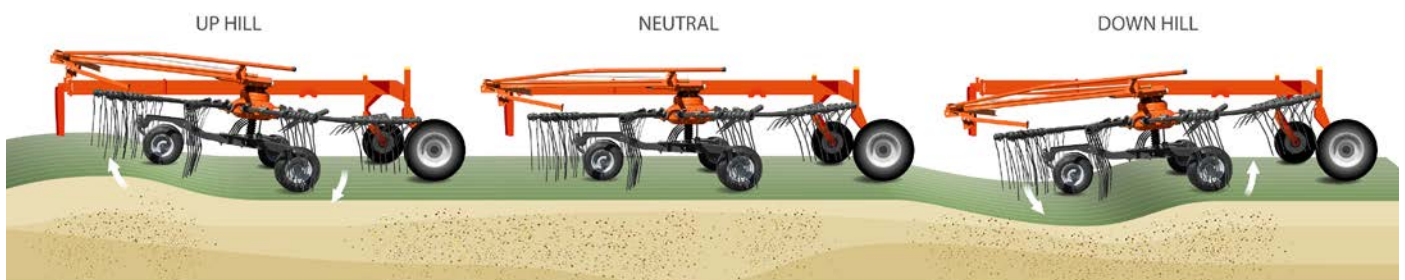
Kubota rotary rakes are designed to produce well-shaped and clean swaths, achieved by precision in every part of the raking. The ground contour following ability is important to avoid dirt in the swath - especially in uneven field conditions.

## Adaptation in 3 Dimensions

These high performance rakes are fitted with the TerraLink Quattro wheel system for superb ground contour following. The TerraLink Quattro system controls the rotor in 3 dimensions, with a unique combination of an undercarriage with 4 wheels and a specially designed rotor suspension system. This ensures superb raking performance, even at higher forward speeds.



*TerraLink Quattro is a maintenance-free system - no pivots or joints to wear out.*



*... ensuring a clean raking result without dirt in the crop.*



# 15 METER WORKING



## **KUBOTA RA4515**

Kubota RA4515 is designed for high output and heavy use. Four rotors, maintenance-free ProLine gearbox, 15m working width and heavy duty mainframe design underline its' potential as a rake for the most demanding customer segment.

### **The Elbow Design Makes the Difference**

The special elbow design of the front rotor arms is a unique feature of the RA4515. Raking width can be matched

to differing crop characteristics, to obtain an evenly shaped and equally wide swath across the full width.

The design also allows quick working width adjustment. In case of contact with an obstacle, the overload protection on the outer arm ensures that it folds back at a certain pressure, securing the main frame structure from damages.

Also when raking along borders, the fast moving front arms can be used to

steer along fences etc. without slowing down. Specially while raking corners, it is possible to clean them in one go as the front rotor can be pushed inside the corner.

The biggest benefit with the system though, is that the next swath will still be straight, as the rotor towards the non-raked area stays in position. When passing obstacles in the field, the front rotors can quickly be moved inwards, ensuring the swaths stays straight.



# WIDTH

## A Superbly Manoeuvrable Unit

The 2-pt headstock allows a turning angle up to 80° and the optional unique steered wheel axles ensure these Kubota rakes have unequalled maneuverability. Despite a total length of 9.20m, even narrow gateways or approach lanes to fields are easily negotiated.

For easy headland management it is possible to tailor the sequence of lifting and lowering the front and rear rotors, to optimize the time delay between front and rear rotors. Three different possibilities can be chosen. All 4 rotors can be lifted individually, allowing you to rake any size or shape of field in a professional and efficient way.

## Brakes and Tyres

The wide tires not only ensures gentle treatment of the ground, but also makes for excellent stability both in the field and on the road. Hydraulic or pneumatic brakes permit road speeds up to 40km/h.

All rotors are equipped with 3 twin wheels, 360° free turnable, for perfect guidance and no problem in narrow curves with destroyed grass fields.

## TACKLE THE TERRAIN



*The unique elbow construction positions the front rotors close to the driver for excellent overview.*

The front rotors are fitted with hydraulic ground pressure control for constant adjustment of ground pressure. Regardless of chosen working width, ground pressure remains even, allowing the rotor to instantly react to uneven field conditions for accurate tracking.

The advantages are obvious, as it leads to less damage and faster regrowth from the stubble and minimum dirt into the crop. Especially in wet conditions the low remaining weight on the rotor is a big advantage in order to get clean crop.



*Each rotor can be independently and hydraulically set for height. As well a minimum height can be mechanically adjusted to secure a correct setting.*



*All 4 rotors can be lifted individually.*



*High lift of rotors ensures generous clearance during headlands turns. Clearance height can be adjusted infinitely.*



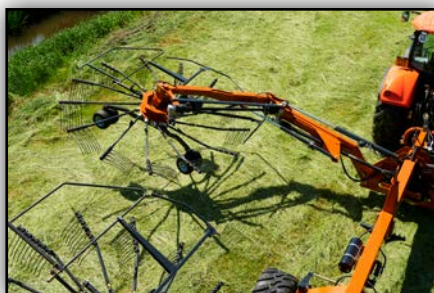
# ABSOLUTELY CUSTOM

## KUBOTA RA4515



### **Adjustable Working Width**

Raking width can be continuously varied on the move between 9.80m and 15.00m. Raking width can be matched to the density of crop to obtain an evenly shaped and equally wide swath over the full length. You can independently steer the outside rotors around an obstacle such as a pole or tree without having to change travel direction with the complete machine.



*The two outer rotors can be adjusted individually to match a working width between 9.50-15.00m.*



*Hydraulic suspension of front lift arm and BreakBack system.*



# IZABLE



## Everything Under Control with ISOBUS Technology

The Kubota RA4515 is fully ISOBUS. This means that it will be plug and play with an ISOBUS compatible tractor without the need for a separate terminal.

The Kubota RA4515 is available with the IsoMatch Tellus or the IsoMatch Tellus GO control terminals. The IsoMatch Tellus GO is especially developed for controlling machines in a simple way. Just connect your machine, step into the tractor cab, switch on the power button and GO. The terminal brings the implement automatically into view. To maximise user comfort all buttons are positioned on right hand side of the terminal. No need to look at the touchscreen when operating the machine.

## Take Full Control

The following functions can be operated with the terminals:

- Swath and working width.
- Programmable lifting height of rotors.
- Automatic selection of transport or working position by pressing an icon.
- Separate lifting of all four rotors.
- Setting of rotor height.
- Adjustment of working width, left and right hand side.
- Active and selectable hydraulic suspension on front rotors.
- Steering of transport axle.
- Headland management activation.
- Adjustment of delay time/meters or manual operation of headland management.
- Special customized user interface, developed with contractors, for very simple control of functions.
- Optional with joystick.



The optional active steering wheel provides excellent manoeuvrability during narrow gateways and tight corners.



With its' clever folding mechanism the total height remains below 4.00m - despite a rotor diameter of 3.85m. And there is no need to remove tine arms for road transport.



# EFFICIENCY SIMPLIF

## KUBOTA RA4012-RA4513



### ProLine or CompactLine Specification

The Kubota 12.5m 4-rotor rake is offered with a choice of either ProLine or CompactLine gearbox. Both machines are similar in construction. They are built up on the same frame concept. The RA4012 CompactLine version is an easy-to-use machine with substantial working width for the professional segment, looking for a dependable machine to ensure stability in the complete harvesting process.

For heavy duty conditions, the RA4513 ProLine machine has been developed.

### Boost Your Capacity

RA4012 and RA4513 are targeted at making lighter work of tough and demanding operations. Being able to accurately feed the machine that follows and keep up efficiency of the complete harvesting system is an essential part of the raking job. With their impressive capacity of 12.50m working width, straightforward design and possibility to adjust both work and swath width, these machines are designed to boost the complete process of collection and pick-up, altering to the changing crop intensity during the season.

### Easy Handling – More Productivity

Both rakes are designed with uncomplicated work days in mind. Forget about sophisticated sensors and control functions, they are designed around the operator with simplicity in mind, focusing on the elements that add real value. Take the control unit for instance. It comes with a rather handy design including pre-selected functions for an array of easy operations. Only one double and one single acting spool valve are required to run RA4513 and RA4012.



## ***BELOW 4M TRANSPORT HEIGHT***



### **More Uptime with max 4m Transport Height**

No reason for wasting time, not even when moving between fields. Just raise the rotors and off you go, safely below 4.00m transport height – no need to leave the tractor for removing tines arms. Large transport wheels and hydraulic brakes are standard.

For storage all tines arms are detachable on RA4012 to allow a storage height as low as 3.40m. A strong and stable storage foot ensures fast and trouble-free coupling and uncoupling.

For RA4513 tines arms are generally fixed, but the top 4 are detachable, to reach same low storage height

### **Excellent Swath Formation**

The rear rotors are designed with a smaller diameter than the front rotors and also turn at higher speed to ensure a more accurate swath formation. This, in combination with the curved tine arms, provides accurate and evenly shaped swaths. The maintenance-free TerraLink Quattro rotor suspension system, operating in 3 dimensions for excellent tracking, works in close combination with the 4 wheeled rotor to ensure high accuracy and stability on slopes. And it is absolutely maintenance- and wear-free.





# COMPACT BUT CAPA

## KUBOTA RA4012-RA4513



### **Hydraulic Adjustment of Working and Swath Width**

The hydraulic adjustment of working and swath width allows you to customize swath intensity and width to the capacity of the following machine. All conveniently handled and controlled from the tractor seat. Working width can be set between 10-12.50m and swath width can be adjusted between 1.20-1.90m, adding the necessary flexibility.

### **Easy Headland Management**

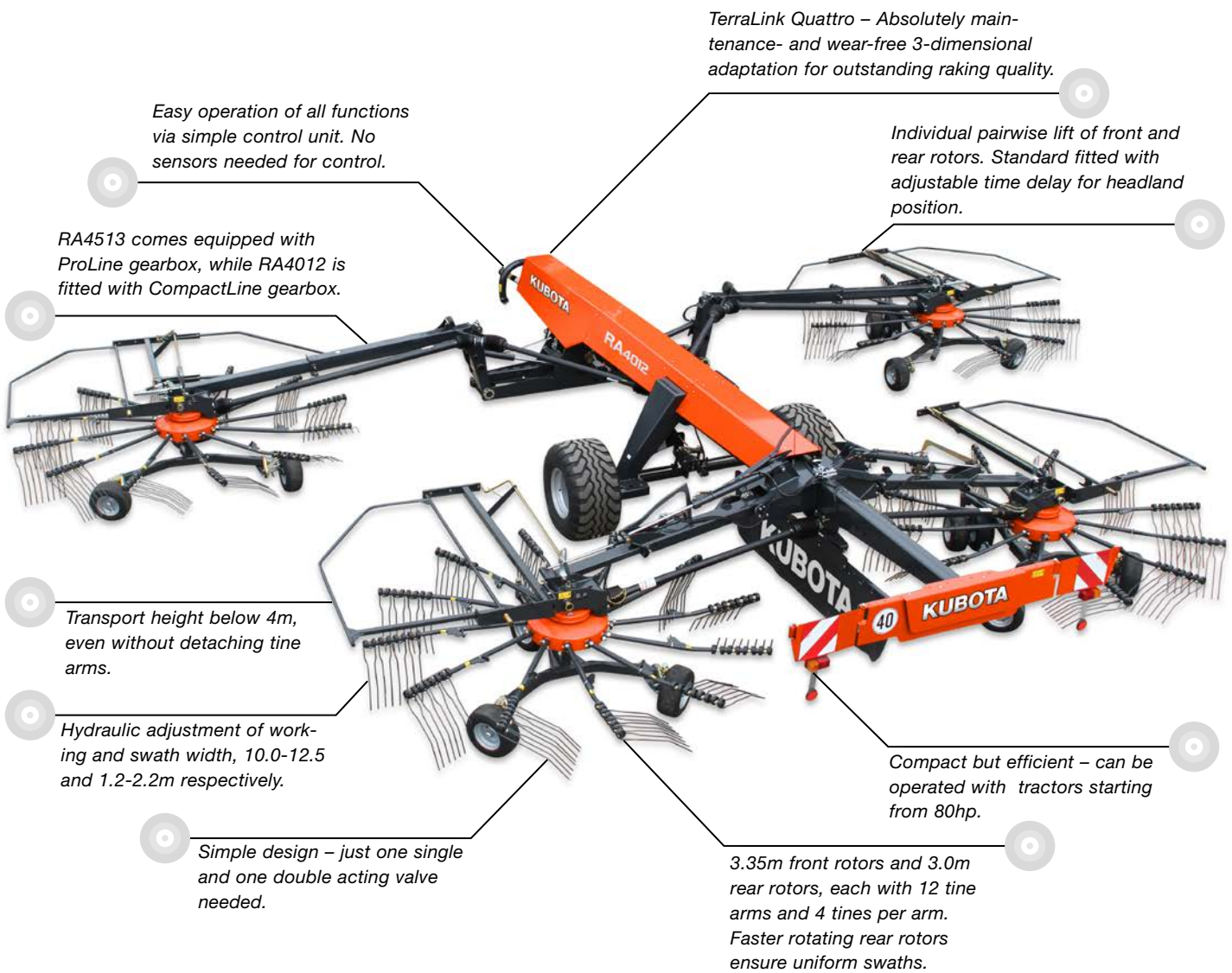
These machines come with enhanced headland management. In addition to high ground clearance of rotors during headland turns, it is possible to tailor time delay between lifting/lowering the front and rear rotors to driving speed and field conditions. This is done mechanically in an easy and uncomplicated way.

RA4513 and RA4012 will do sharp turns of up to 80°, both on headlands and during transport when passing narrow gateways.

The rotors can as a standard feature lift pairwise, convenient for raking crop away from fence lines or when raking low crop fields.



# BLE



Easy operation of all functions via simple control unit. No sensors needed for control.

RA4513 comes equipped with ProLine gearbox, while RA4012 is fitted with CompactLine gearbox.

TerraLink Quattro – Absolutely maintenance- and wear-free 3-dimensional adaptation for outstanding raking quality.

Individual pairwise lift of front and rear rotors. Standard fitted with adjustable time delay for headland position.

Transport height below 4m, even without detaching tine arms.

Hydraulic adjustment of working and swath width, 10.0-12.5 and 1.2-2.2m respectively.

Simple design – just one single and one double acting valve needed.

Compact but efficient – can be operated with tractors starting from 80hp.

3.35m front rotors and 3.0m rear rotors, each with 12 tine arms and 4 tines per arm. Faster rotating rear rotors ensure uniform swaths.



Easy and intuitive control function, all handled from the tractor cab.



Working width can be set hydraulically between 10-12.5m. Swath width is also set hydraulically between 1.2 and 1.9m.

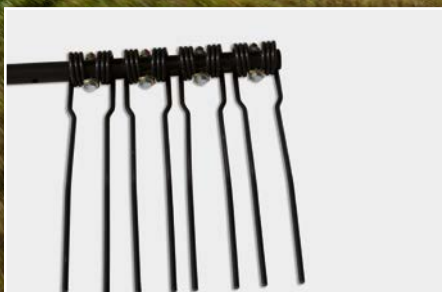


High lift of rotors ensures generous clearance during headland turns.



# THE TOUGH AND STU

## KUBOTA RA2580-RA2584- RA2590 HYDRO-RA2590 PRO



ProLine tines with 10mm diameter.

### Heavy Duty Rakes

With adjustable working widths ranging from 7.00m to 9.00m, these heavy duty specification rakes provide the swath formation capability to keep harvesting operations running at their optimum output. At the heart of all models is a heavy duty rotor head system. Proven to perform year in, year out in heavy first cut crop, it is superbly engineered, with the crown wheel and pinion assembly running in a fully enclosed oilbath.

### RA2580 - Design Optimized for Transport

RA2580 masters both extensive working width and compact transport measures. The new design of the wheel axles allows for the addition of generous 380/55 wheels as standard, whilst still offering a narrow outer track width, making it the perfect match for narrow roads and tight gateways. Transport height is below 4.00m, even with all tine arms attached. No need to leave the tractor, just fold and go.

Add in the 80° turning headstock and active wheel steering, and you have a highly maneuverable machine on road and in the field.

### Flexible Working Width

RA2580: 7.00-8.00m working width.  
RA2584: 7.60-8.40m working width.  
RA2590 Hydro: 8.00-9.00m working width.  
RA2590 Pro: 8.00-9.00m working width.



# RDY RAKES

## On-the-Go Rotor Height Adjustment

A ComfortKit is optionally available for RA2580 and standard on RA2590 Pro. This includes a hand-held joystick control that brings all control functions into one. The height of each rotor is controlled electronically, and actual height of each rotor is shown on the screen of the control box. In this way fine tuning rotor height, improving your work result is easily done on the go.

A screen indicator shows the actual height in percent. It is as well possible to set a personal zero point, to prevent too deep raking. On top the kit includes individual rotor lifting. It is possible to adjust the rotors together or individual in all positions.



*With 9.00m working width and transport height below 4.00m, even without detaching tine arms, the RA2590 Hydro offers remarkable productivity with no downtime.*

## Excellent Maneuverability

The rear carrier frame with controlled steering facility gives this rake excellent track following characteristics, allowing tight turns on headlands and loss free swathing even in awkwardly shaped fields. Even if the rotors are lifted on a steep slope, the steering system reliably counteracts any deviation. During headland turns the rotors are lifted up to 45cm from the ground to prevent swath damage.

- Actively steered wheels for excellent tracking.
- Ability to make sharp turns up to 80°.
- High lift of up to 45cm of rotors ensures generous clearance during headlands turns.
- Raking with only one rotor (standard on RA2590 Hydro, optional on RA2580 and RA2584).



*Kubota RA2584 is converted hydraulically for transport position from tractor cab.*

## RA2590 Hydro – High Capacity in Field, Compact on the Road

RA2590 Hydro will go as wide as 9.00m during work with its´ twin rotors, and offers the flexibility to adjust the working width between 8.00-9.00m. It will stay below 4.00m during transport, even with all tine arms fully mounted.

Thanks to the hydro axles which are a unique Kubota feature, the complete rake can be lowered hydraulically for transport, ensuring that it will go below 4.00m transport height. Another benefit is that the gravity point is moved towards the ground, and in combination with the wide track width and large 380/55-17 tyres it creates excellent weight distribution and stability during transport.



# COMPACT CENTRE SW

**KUBOTA RA2064-RA2072-  
RA2072 HYDRO-RA2076**



The ability to make sharp turns up to 80° and the cross stabilizer in the headstock are Kubota features.



The hydraulic adjustable rotors on RA2076 can be set between 7.00m...



...and 7.80m working width.



# ATH RAKES

## Compact Design – High Performance

Kubota offers a range of cost-effective two rotor rakes with strong design. The rakes produce a nice even centre swath from raking widths between 6.20m and 7.80m. They are mounted on a strong and stable frame to ensure long lifetime. Features such as actively steered wheels, the TerraLink Quattro system and hydraulic working width adjustment are standard - except for the low cost start up model RA2064.

## Unique Manoeuvrability

The rear carrier frame with controlled steering facility allows tight turns on headlands and loss free swathing even in awkwardly shaped fields. When in headland position, an outstanding lifting height of 45cm, prevents swath damage. The ability to make sharp turns up to 80° and the cross stabilizer in the headstock are Kubota features.

These double rotor rakes offer hydraulically adjustable working width. This enables varying the swath width from 1.20-1.90m, ensuring a perfect match to the pick-up width of loader wagons, balers and foragers.

## RESETTING THE STANDARD

### RA2072 HYDRO

The RA2072 Hydro is fitted with hydraulically operated axles on the main frame, in order to lift and lower the machine during transport and operation. This feature significantly reduces transport height by 40cm, allowing a transport height as low as 3.45m

Add in features such as adjustable working width of 6.20-7.20m, TerraLink Quattro ground contour following and heavy duty carrier frame design, and the result is low maintenance, higher productivity and maximum operation comfort.

All main functions, such as lifting and lowering of main frame and rotors are operated from the tractor cab, using an electro-hydraulic handheld control. It is also possible to pre-select lift activation of the rotor units via the terminal. Such an integrated solution is offered only by Kubota.



Easy setting of correct raking height.



To limit transport height further the tine arms can be removed on RA2076. The swath board folds up automatically.



Single rotor activation is optionally available. Standard on Hydro version.



# OBVIOUS SIDE EFFECT

## KUBOTA RA2577



*The low position of the rear frame ensures excellent stability.*



*The side delivery concept allows you to collect crop from 15.00m into a single swath.*



*Active wheel steering for improved manoeuvrability in combination with large wheels for reduced compaction.*

### **RA2577**

The RA2577 ProLine double rotor rake delivers a working width of 7.70m. The side delivery concept adds excellent flexibility in swath formation and allows you to collect crop from a working width of up to 15.00m into one swath.

The high built mainframe concept offers excellent ground clearance in headland position (40cm). Actively steered wheels allow sharp turning, both on headlands and during transport when passing narrow gate ways.

RA2577 is fitted with the renowned ProLine gearbox, with its' maintenance-free oilbath solution. The shape of the massive 400mm curve disc, allows the tine arms to leave the crop faster, leaving a more uniform swath shape. In addition the rotors feature 12 tine arms on the front rotor, each with 4 tines, and 13 tine arms, each with 5 tines on the rear rotor. This ensures more accurate raking performance and allowing higher forward speed.

The carrier frame features a lower position of the rear frame. The rotor wheels of the undercarriage are positioned further to the back of the rotor for improved ground contour following under difficult circumstances. In addition RA2577 is fitted with the Kubota TerraLink Quattro wheel system for superb ground contour followings. This system controls the rotor in 3 dimensions.



# EFFICIENCY DOUBLED

## **KUBOTA RA2069 EVO- RA2069 VARIO**



*Generous overlap between rotors ensures clean raking.*



*The VARIO version offers the possibility of raking two separate swaths.*



*RA2069 features a headstock that turns through a 80° angle for superior manoeuvrability.*

### **RA2069 EVO/VARIO**

This compact and nimble rake features a sturdy frame and the well-proven TerraLink Quattro ground following system. The two rotors provide generous overlapping, and the cam tracks are matched to each other to transfer the material uniformly. Min 40cm lifting height ensures that existing swaths remain undamaged when crossed.

In addition the VARIO model offers the possibility of raking two separate swaths. With a working width of 6.90m, the machine rakes up double swaths of up to 13.20m. There are 11 removable tine arms equipped with 4 tines on the front and 12 arms with 5 tines on the rear rotor in order to compensate for the higher load going through the second rotor.

A host of exciting details such as the well thought-out continuous driveline make RA2069 a universal machine that suits a wide range of applications. Trailing boogie wheels made for tight cornering, without the risk of tilting the rotors and tines scraping the ground.



# LARGE IN FIELD, SMA

## *KUBOTA RA2071T EVO-RA2071T VARIO*



### **Flexible Raking**

The RA2071T EVO and RA2071T VARIO are designed for maximum flexibility for raking in different conditions. The twin rotors, working independently from each other, makes it possible to collect either one large swath or two smaller swaths. Alternatively the rakes can place two large swaths into one, allowing a total of up to 12.50m crop to be gathered into one.

### **VARIO specification**

The VARIO version also offers the patented SideShift system which comprises electro-hydraulic control of all functions.

### **Kubota SideShift**

A special feature on the RA2071T VARIO is the possibility to sideshift both rotors - both front and the rear - from the tractor cab. With this patented system, raking along field boundaries or around trees is no problem - as the tractor

can run at a safe distance from the obstacles. It is also possible to drive with the tractor on already raked ground.

### **Easy Conversion from Working to Transport Configuration**

There is no need to remove tine arms. Converting RA2071T into transport position only requires a simple operation on the control unit. The swath deflector is lifted hydraulically and transport width is limited to only 3.00m (to reach 2.45m, the tine arms can be removed).



# LL IN TRANSPORT



*With 50cm lifting height, swaths are easily crossed.*



*Pulled axles for smooth running characteristics and reduced power requirement.*



*SideShift to the right - conveniently passing trees.*



*SideShift to the left - raking without driving on unraked crop.*



*Both models are equipped with a double, wide angle PTO shaft - for increased manoeuvrability.*

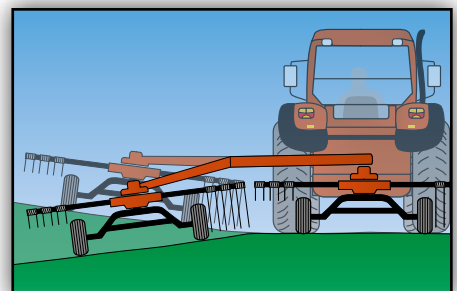


*Both rakes are capable of placing small night swaths for hay crops.*

The machine comes as Evo standard with tandem axle in the front. As Vario the machine is equipped as well with a land wheel standard (option for EVO) Optional the machine can be equipped with up to 13 wheels with tandem axles on the rear rotor and two sets of inner tandem axles on the front of the undercarriage. 11 Arms in the front and 12 arms in the rear secure a even swath and good crop flow, which prevents roping.

## **Kubota TerraLink – 5-Fold Benefits**

- Absolutely maintenance- and wear-free.
- Superb tracking in road transport.
- Trailed axle configuration enhances quiet-running and reduces tractor input power, particularly in wet conditions.
- Boogies are set to wide track widths and specified with 18.5" tyres, to sense field contours right on the tines for perfect ground following and stability on the slopes.
- Automatic dampening provides quiet machine running.





# RELIABLE, RUGGED D



## **KUBOTA RA1542-RA1546**

### **High Performance**

Kubota ProLine single rotor rakes include a gearbox design with excellent working result. Features such as oscillation dampers, tandem axles and HydroLift height adjustment are hallmarks of these single rotor rakes.

### **ProLine Gearbox**

The Kubota single rotor rakes are based on the ProLine gearbox technology. These machines offer working widths of 4.20m and 4.60m respectively and are

fitted with the Kubota ProLine gearbox, with its maintenance-free oilbath solution.

The ProLine gearbox ensures excellent swath formation. The shape of the massive 400mm curve disc, has been perfected to allow the tine arms to leave the crop faster, leaving a more uniform swath shape.

Both rakes are standard fitted with both 4 wheel tandem axles and oscillation

dampers, offering excellent ground contour following, minimizing the amount of dirt collected in the swath.

### **HydroLift Concept**

A unique feature of RA1542 and RA1546 is the HydroLift concept. It is a hydraulic height adjustment system that allows the driver to quickly adjust working height to different ground conditions from the tractor cab. With the unique possibility of setting a minimum height.



# ESIGN



*As an option these rakes can be supplied with a third wheel, to ensure even better flotation.*



*Infinitely variable cam track adjustment allows fine tuning, to obtain optimum raking and swath formation according to crop conditions.*



*Standard oscillation dampers ensure excellent running characteristics.*



*For transport or storage, the rotor guard frames are folded up close to the main frame, locking automatically into position. An assist spring linked to the swath board reduces the effort required.*



*ProLine oilbath gearbox design ensures maintenance-free operation. Tine arms can be easily removed.*



# MACHINES FOR SMA

## ***KUBOTA RA1032-RA1035-RA1039- RA1042T-RA1043-RA1047T***



### **The Compact Range**

For smaller raking operations, Kubota offers several models designed for use on lower horsepower tractors, whilst delivering similar raking performance compared to its' higher specification machines. With the pivoting three point linkage machines and also two trailed versions, there is a model to suit any need, from lowland farmers, to the users working on steep hillsides.

### **Kubota 'Compact' Rotor Head**

The rotor head is grease lubricated. Within a fully enclosed housing, the maintenance-free cam track and cam followers are running permanently lubricated in an oilbath. The rotor shaft and pinion shaft are all mounted on two bearings for maximum strength and long service life.



*The trailed machines can conveniently be raised up to a height of 50cm from the tractor driver's seat.*



# LLER TRACTORS

## ***CURVED TINE ARMS***

All Kubota CompactLine rakes feature cranked tine arms for significantly cleaner raking performance and optimised swath formation. This design ensures that the row of tines on each

tine bar has a more effective approach angle to the oncoming crop, and also gives a cleaner lift out of the tine from the formed swath.



*RA1032 – compact entry-level 3.20m rake with a weight of only 320kg.*



*RA1039 – 3.90m working width, weighing 460kg.*



*RA1043 – 4.30m working width with a weight of 490kg.*



*RA1047T - 4.70m working width and a weight of only 665kg.*



*As an option these rakes can be supplied with a third wheel, to ensure even better flotation.*



*All rakes can be set for reduced transport and storage width by removing the tine arms and placing them on the carrier frame.*



*A pivoting 3-pt headstock ensures perfect ground following performance, and perfect tracking when cornering. Oscillation dampers are optionally available.*



# SPECIFICATIONS

Kubota Models	RA1032	RA1035	RA1039	RA1043	RA1042T	RA1047T	RA1542	RA1546	RA2064	RA2069 VARIO
CompactLine	•	•	•	•	•	•	-	-	•	•
ProLine	-	-	-	-	-	-	•	•	-	-
<b>Dimensions &amp; Weight</b>										
Working width (m)	3.20	3.50	3.90	4.30	4.20	4.70	4.20	4.60	6.35	6.90/7.90
Transport width (m)	1.60	1.75	1.75	2.10	2.00	2.40	1.75	2.15	2.80	2.85
Transport length (m)	3.10	3.35	3.60	3.85	3.90	4.80	3.15	3.35	5.90	8.45
Parking height (m)	1.60	1.70	1.85	2.00	2.30	2.65	2.60	2.75	3.85	3.45**/4.10
Weight (kg)	315	420	460	480	570	665	640	670	1510	1930
Swath width appr. (m)									1.20	
Capacity theo. (ha/h)	3.5	3.9	4.3	4.7	4.6	5.2	4.6	5.1	6.9	7.6/8.7
<b>Hitching system</b>										
Pivoting 3-pt headstock (cat.)	1/2	1/2	1/2	1/2	-	-	2	2	-	-
Lower links (2-pt.)	-	-	-	-	-	-	-	-	•	•
Linkage drawbar	-	-	-	-	•	•	-	-	-	-
Gauge wheel 16°	o	o	o	o	o	o	o	o	-	-
<b>Rotors/Tine arms/Tines</b>										
Rotor diameter (m)	2.60	2.80	3.05	3.35	3.35	3.65	3.35	3.65	3.00	3.35
Swath delivery	left	left	left	left	left	left	left	left	centre	left
Number of rotors	1	1	1	1	1	1	1	1	2	2
Number of arms per rotor	9	10	11	12	11	12	12	13	10	11/12
Number of double tines/arm	3	4	4	4	4	4	4	4	4	4/5
Tine diameter (mm)	9	9	9	9	9	9	10	10	9	9
Continuous cam track	-	-	-	-	-	-	•	•	-	-
Detachable tine arms	•	•	•	•	•	•	•	•	-	•
Height adjustment	rack trail	mech.	mech.	mech.	mech.	mech.	hydr.	hydr.	mech.	mech.
<b>Wheels and axles</b>										
Tyre (rotors)	15x6.00-6	16x6.50-6	16x6.50-6	16x6.50-6	18.5x8.50-8	18x8.50-8	16x6.50-6	16x6.50-6	16x6.50-6	16x6.50-6
Fixed tandem axle	o	o	o	o	•	•	•	•	o	-
Pivoting tandem axle	-	-	-	-	-	-	o	o	-	-
Stand. tyres (carrying frame)	-	-	-	-	-	-	-	-	10.0/75-15.3	10.0/75-15.3
Opt. tyres (carrying frame)	-	-	-	-	-	-	-	-	-	-
<b>Optional equipment</b>										
Carrier arm compensating	o	o	o	o	-	-	•	•	-	-
Locking catch for slopes	o	o	o	o	-	-	•	•	-	-
<b>Safety accessories</b>										
Warning panels	o	o	o	o	o	o	o	o	•	•
Road lights	o	o	o	o	o	o	o	o	•	•
• = Standard o = Optional - = Not available										
* = Double swath ** = With detached tine arms and lowered headstock *** = Hydraulically lowered main frame										



Kubota RA1032.



Kubota RA1546.



Kubota RA2069 VARIO.



RA2069 EVO	RA2071T VARIO	RA2071T EVO	RA2072	RA2072 HYDRO	RA2076	RA2577	RA2580	RA2584	RA2590 HYDRO/Pro	RA4012	RA4513	RA4515
•	•	•	•	•	•	-	-	-	-	-	-	-
-	-	-	-	-	-	•	•	•	•	•	•	•
6.90	6.60/7.10*	6.60/7.10*	6.20/7.20	6.20/7.20	7.00/7.80	7.70	7.00-8.00	7.60-8.40	8.00-9.00	10.00-12.50	10.00-12.50	9.80-15.00
2.85	2.20**/3.00	2.20**/3.00	2.80	2.80	2.80	2.85	2.80	2.98	2.98	2.99	2.99	2.99
8.45	7.40**/8.20	7.40**/8.20	5.90	5.90	5.90	8.90	5.95	6.25	6.25	8.75	8.75	9.85
3.45**/4.10	-	-	3.85	3.45***/3.95	3.45**/4.10	3.70**/4.10	3.41/3.90	3.45**/4.10	3.50**/3.98	3.45/3.99	3.45/3.99	3.45**/4.00
1740	1400	1350	1640	1680	1640	2160	2065	1950	2350	4300	4700	6000
			1.20-1.90	1.20-1.90	1.30-1.90		1.20-2.20	1.40-2.10	1.40-2.40	1.20-1.90	1.20-1.90	1.40-2.50
7.6	7.3	7.3	7.5	7.5	8.4	8.5	8.8	9.2	9.9	13.8	13.8	16.5
-	-	-	-	-	-	-	-	-	-	-	-	-
•	-	-	•	•	•	•	•	•	•	•	•	•
-	•	•	-	-	-	-	-	-	-	-	-	-
-	•	0	-	-	-	-	-	-	-	-	-	-
3.35	2.95	2.95	3.00	3.00	3.35	3.65	3.35	3.65	3.85	3.05/3.35	3.05/3.35	3.85
left	left	left	centre	centre	centre	left	centre	centre	centre	centre	centre	centre
2	2	2	2	2	2	2	2	2	2	4	4	4
11/12	11/12	11/12	11	11	11	12/13	2x12	2x12	2x14	4x12	4x12	13/15
4/5	4	4	4	4	4	4/5	4	4	4	4	4	4/5
9	9	9	9	9	9	10	10	10	10	9	10	10
-	-	-	-	-	-	•	•	•	•	-	•	•
•	•	•	-	-	•	•	(4)	•	(4)	•	(4)	(4)
mech.	mech.	mech.	mech.	mech.	mech.	mech.	mech./hydr. o	mech.	mech./Pro el.	mech.	mech.	hydr.
16x6.50-6	18.5x8.50-8	18.5x8.50-8	16x6.50-6	16x6.50-6	16x6.50-6	16x6.50-6	16x6.50-6	16x6.50-6	16x6.50-6	16x6.50-6	16x6.50-6	16x6.50-6
-	0	0	0	0	0	-	0	0	0	-	-	Terra
-	-	-	-	-	-	-	-	-	-	0	0	Contact
10.0/75-15.3	-	-	10.0/75-15.3	10.0/75-15.3	10.0/75-15.3	380/55-17	380/55-17	380/55-17	380/55-17	500/50-17	500/50-17	560/60-22.5
-	-	-	-	-	-	-	-	-	-	-	-	-
-	-	-	-	-	-	-	-	0	•	0	0	•
-	-	-	-	-	-	-	-	-	-	-	-	-
•	•	•	•	•	•	•	•	•	•	•	•	•
•	•	•	•	•	•	•	•	•	•	•	•	•



Kubota RA2577.



Kubota RA2590 Hydro.



Kubota RA4515.



*The company reserves the right to change the above specifications without notice. This brochure is for descriptive purpose only. Some of the items pictured in this brochure are optional and not standard equipment. Please consult your local Kubota dealer for warranty, safety or product information. For your safety, Kubota strongly recommend the use of a seat belt in all applications.*

©2017 Kverneland Group Kerteminde AS



**KVERNELAND GROUP UK LTD.**

Walkers Lane, Lea Green, St. Helens  
Merseyside, WA9 4AF  
Phone + 44 1744 8532 00

Visit our web site at: [www.kubota.co.uk](http://www.kubota.co.uk)